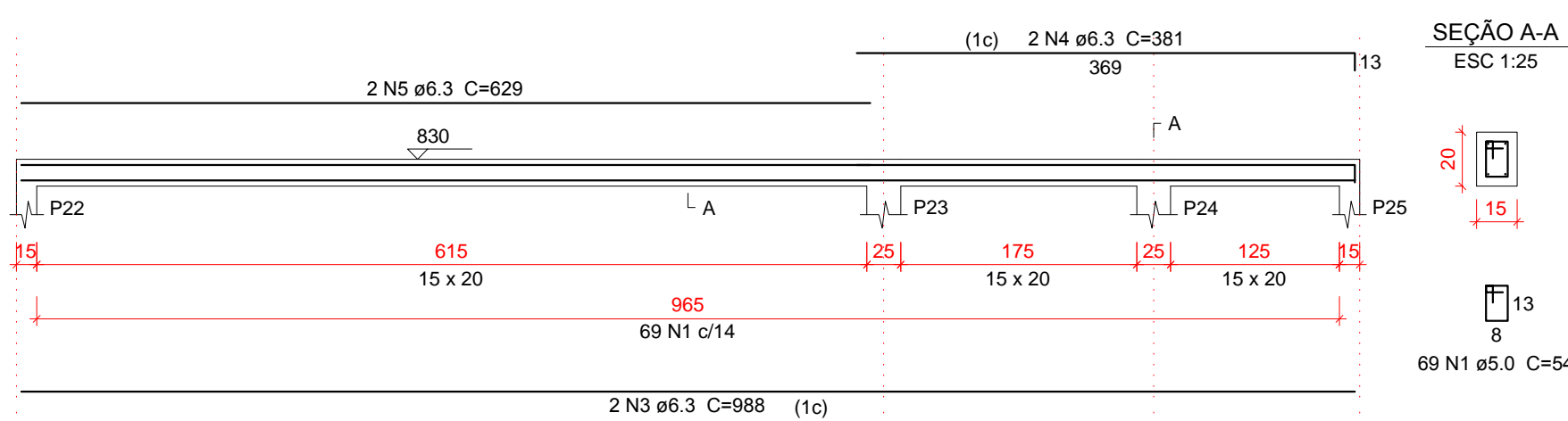
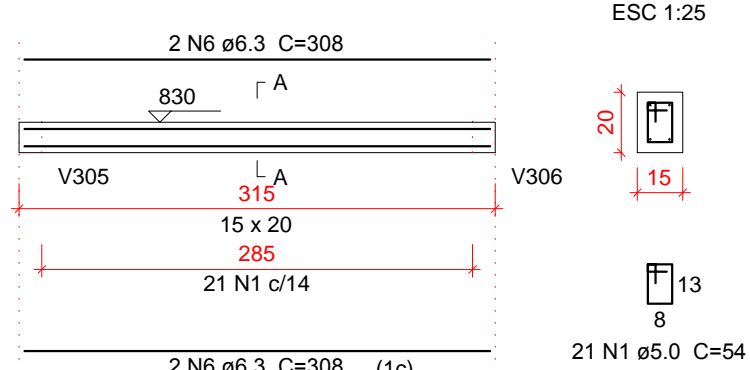


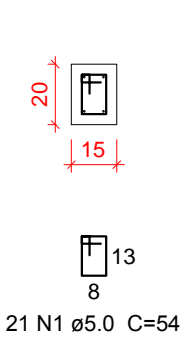
V301
ESC 1:50



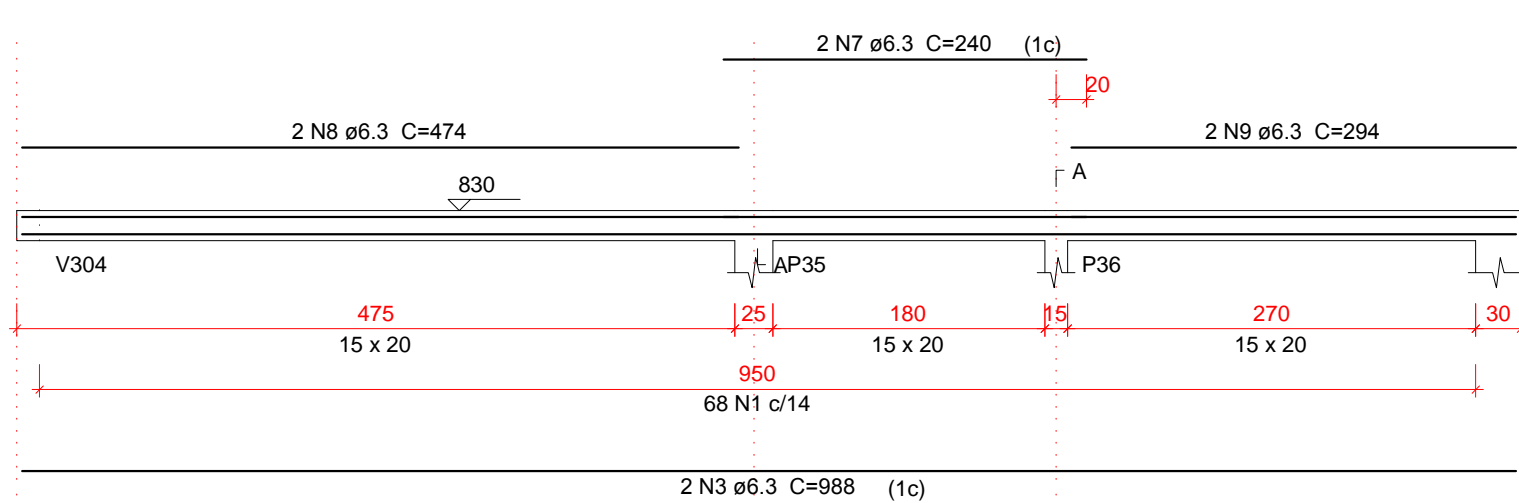
V302
ESC 1:50



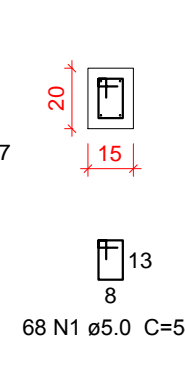
SEÇÃO A-A
ESC 1:25



V303
ESC 1:50



SEÇÃO A-A
ESC 1:25



Relação do aço

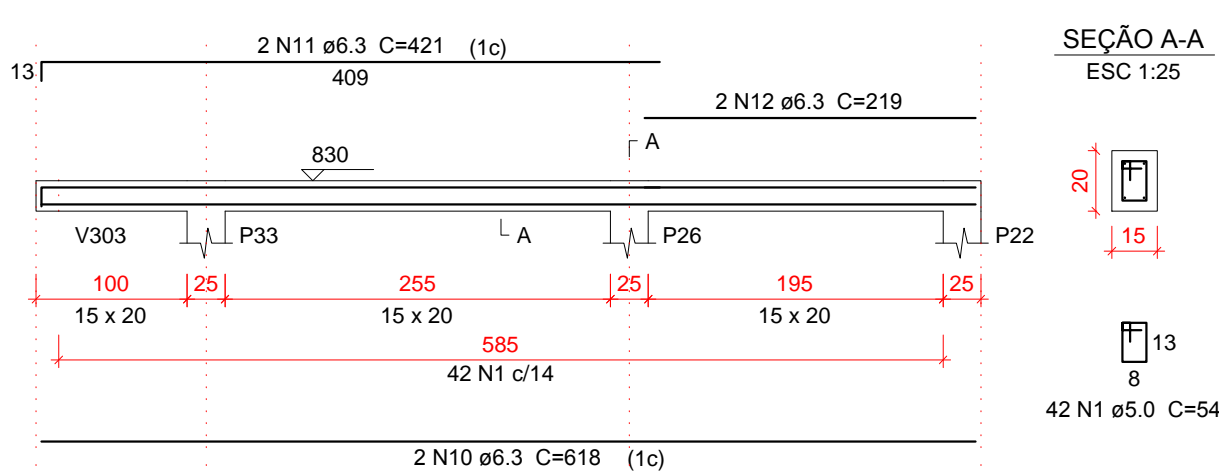
AÇO	N	DIAM (mm)	QUANT	C.UNIT (cm)	C.TOTAL (cm)
CA60	1	5.0	356	54	19224
	2	5.0	64	74	4736
CA50	3	6.3	4	988	3952
	4	6.3	2	381	762
	5	6.3	2	629	1258
	6	6.3	4	308	1232
	7	6.3	2	240	480
	8	6.3	2	474	948
	9	6.3	2	284	568
	10	6.3	2	618	1236
	11	6.3	2	421	842
	12	6.3	2	219	438
	13	6.3	2	398	796
	14	6.3	2	176	352
	15	6.3	2	244	488
	16	6.3	2	613	1226
	17	6.3	2	318	636
	18	6.3	2	317	634
	19	6.3	4	108	432
	20	6.3	2	693	1386
	21	6.3	2	379	758
	22	6.3	2	337	674
	23	6.3	2	218	436
	24	6.3	2	241	482
	25	6.3	2	208	416
	26	6.3	2	231	462
	27	8.0	2	166	332
	28	8.0	2	197	394
	29	8.0	2	308	616
	30	8.0	2	326	652
	31	8.0	4	253	1012
	32	8.0	2	336	672
	33	8.0	2	372	744

Resumo do aço

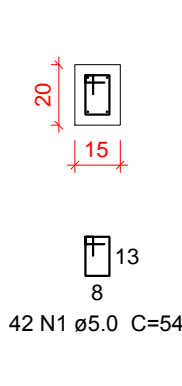
AÇO	DIAM (mm)	C.TOTAL (m)	QUANT + 10 % (Barras)	PESO + 10 % (kg)
CA50	6.3	209.2	20	56.3
CA60	8.0	44.7	5	18.4
	5.0	239.6	-	40.6
PESO TOTAL (kg)				
CA50			75.7	
CA60			40.6	

Volume de concreto (C-30) = 2.05 m³
Área de forma = 36.85 m²

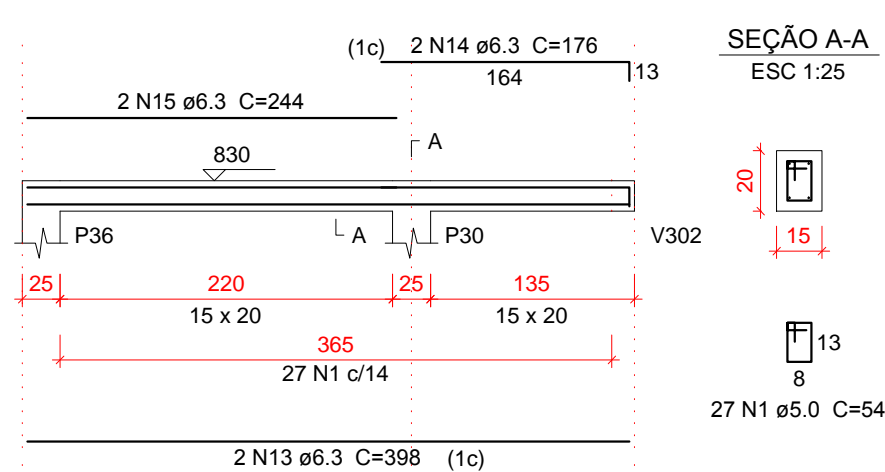
V304
ESC 1:50



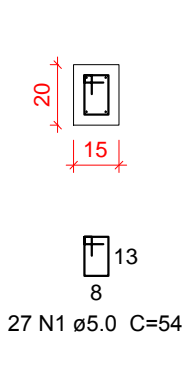
SEÇÃO A-A
ESC 1:25



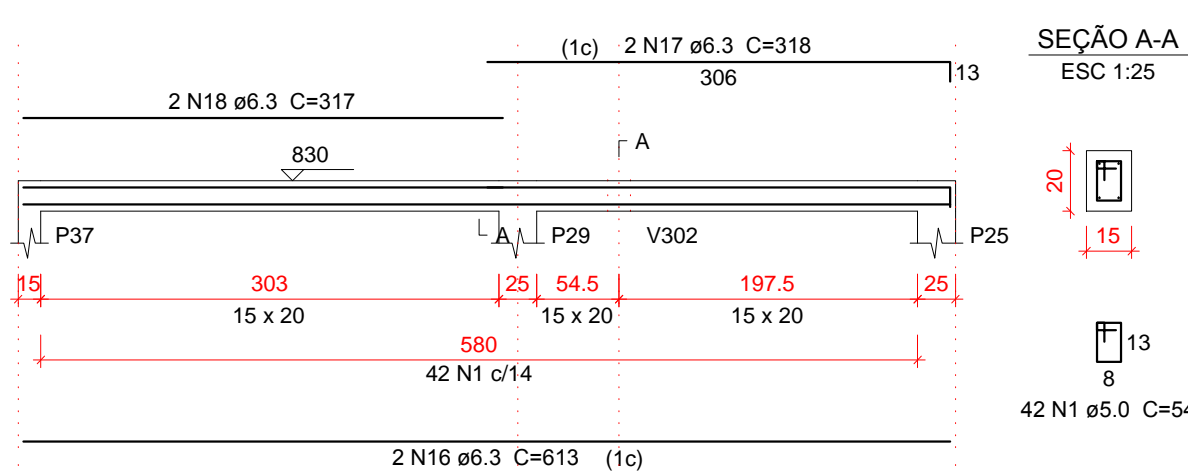
V305
ESC 1:50



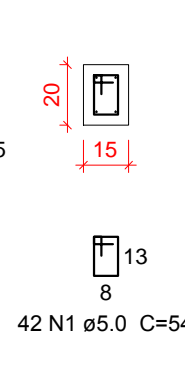
SEÇÃO A-A
ESC 1:25



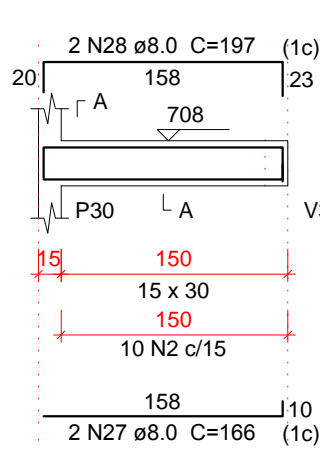
V306
ESC 1:50



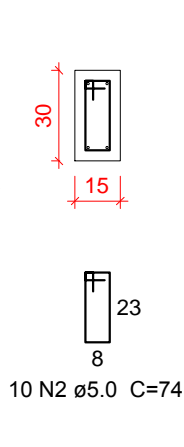
SEÇÃO A-A
ESC 1:25



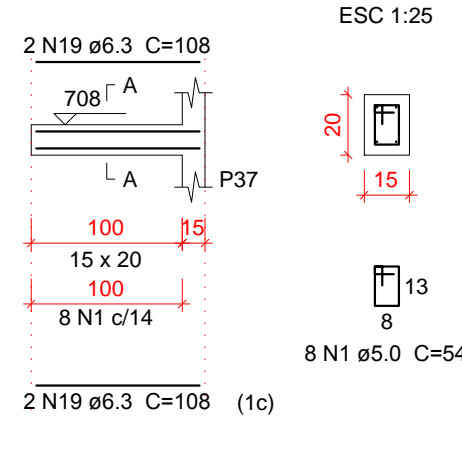
V307
ESC 1:50



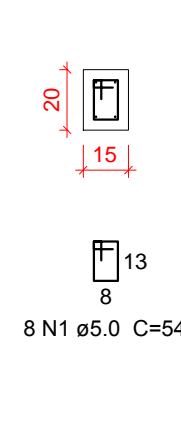
SEÇÃO A-A
ESC 1:25



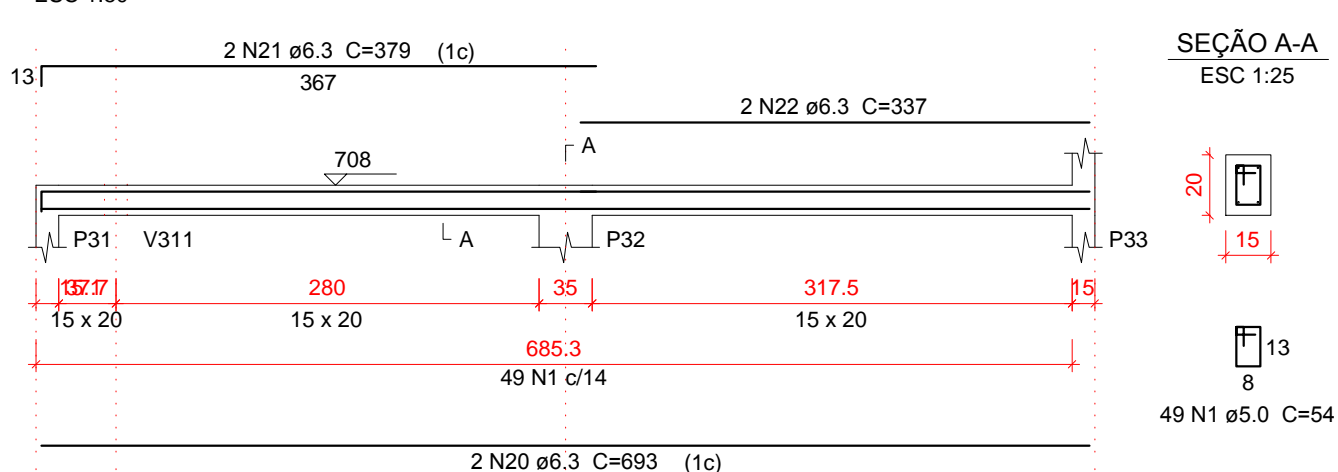
V314
ESC 1:50



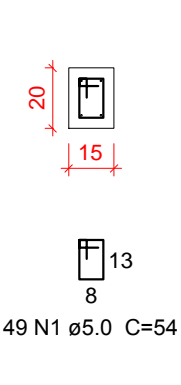
SEÇÃO A-A
ESC 1:25



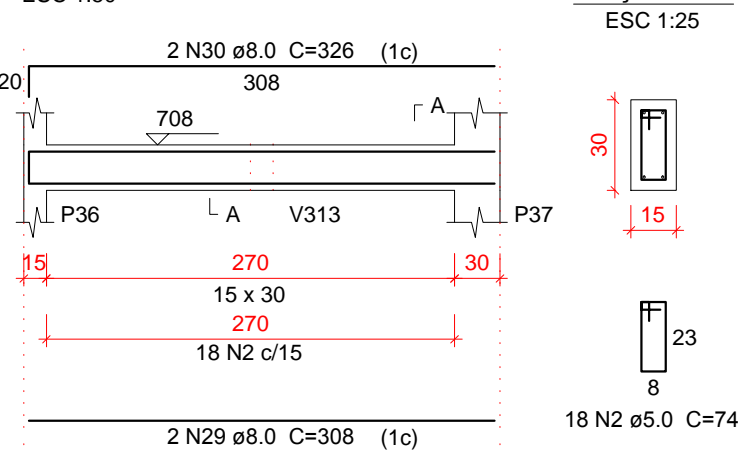
V308
ESC 1:50



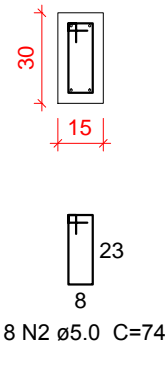
SEÇÃO A-A
ESC 1:25



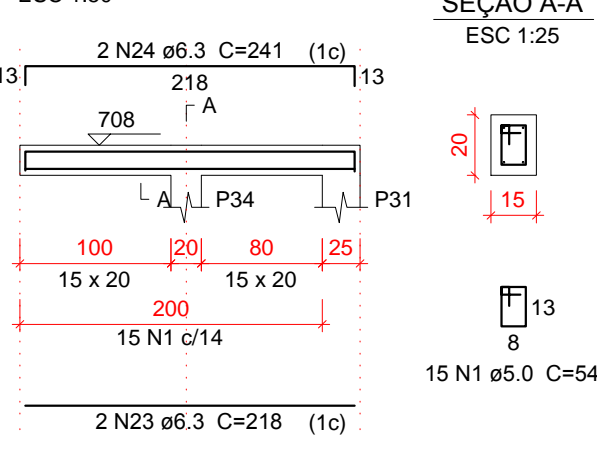
V309
ESC 1:50



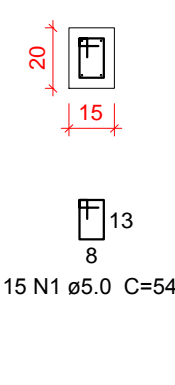
SEÇÃO A-A
ESC 1:25



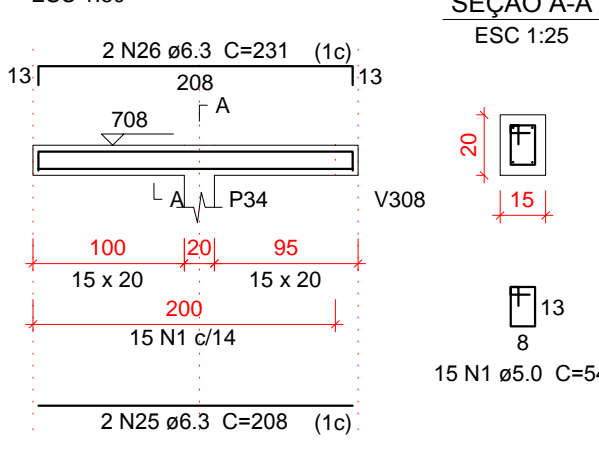
V310
ESC 1:50



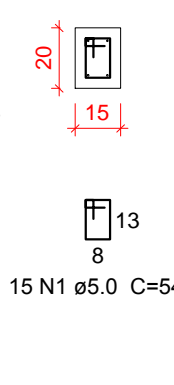
SEÇÃO A-A
ESC 1:25



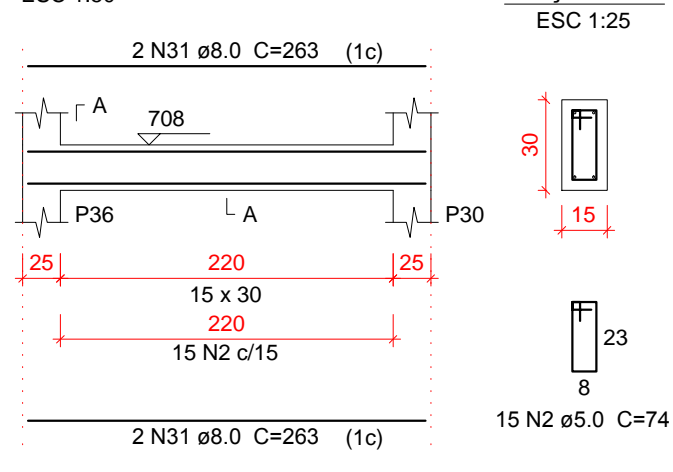
V311
ESC 1:50



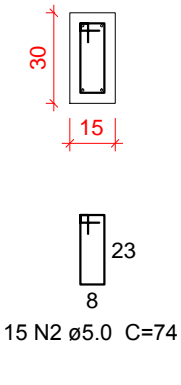
SEÇÃO A-A
ESC 1:25



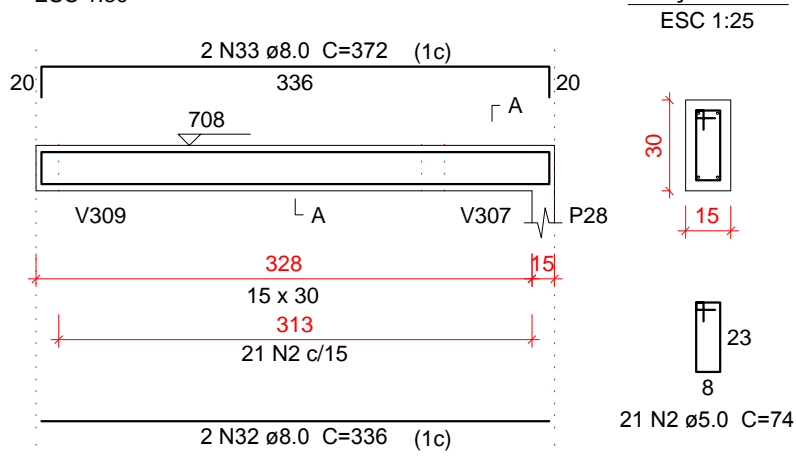
V312
ESC 1:50



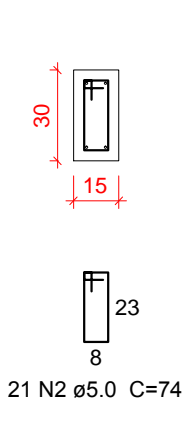
SEÇÃO A-A
ESC 1:25



V313
ESC 1:50



SEÇÃO A-A
ESC 1:25



APROVAÇÕES:

A APROVAÇÃO DO PRESENTE PROJETO PELA PREFEITURA, NÃO RECONHECE A PROPRIEDADE DO IMÓVEL.



CLEBER LUIS HAHN
ENGENHEIRO CIVIL - CREA PR 94.816/D

PROJETO E EXECUÇÃO
RES. ENG. CIVIL - CREA PR 94.816/D - 01/2025

TÍTULO:

PROJETO ESTRUTURAL

OBRA:

Comercial em Alvenaria

PRETENDENTE:

ACIM - Associação Comercial e Empresarial de Mercedes

ENDEREÇO DA OBRA:

Rua Doutor Flores / Lote 07 / Quadra 32 / Centro / Mercedes / PR

REFERÊNCIA:

Armadura de vigas do pavimento INTERMEDIÁRIO/ PLATIBANDA e PLATIBANDA

DADOS ESTATÍSTICOS:

VER PROJETO ARQUITETÔNICO

ASSINATURA DO PRETENDENTE:

Associação Comercial e Empresarial de Mercedes
CNPJ: 72.326.620/0001-88

RESPONSÁVEL PROJETO / DESENHO:

Engº Civil Cleber Luis Hahn
Registro Crea PR - 94.816/D - CPF: 020.404.019-11

RESPONSÁVEL EXECUÇÃO:

DATA:

01 / 2025

PRANCHA:

EST_021